



Figure S1. Samples of wastewater collected from different sites of three different plants (Delbshan, Kafr El-Zayat and Tanta) in El-Gharbia Governorate, Egypt, 1; raw water (influent), 2; sedimentation tank, 3; aeration tanks, 4; effluent.

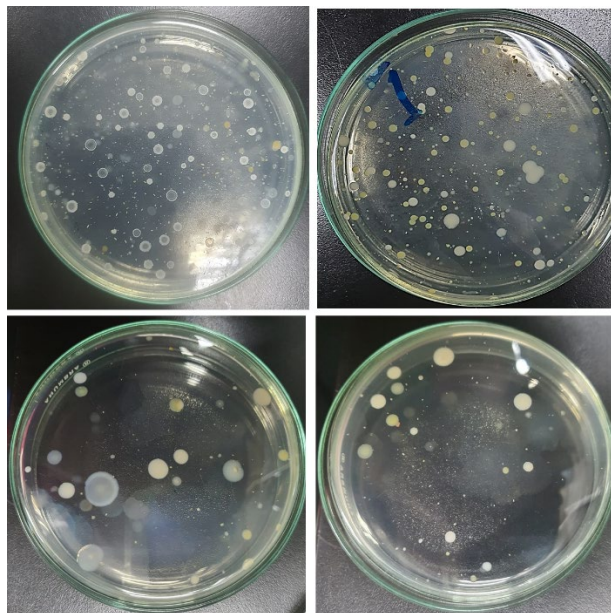


Figure S2. Images showing different bacteria isolated from wastewater

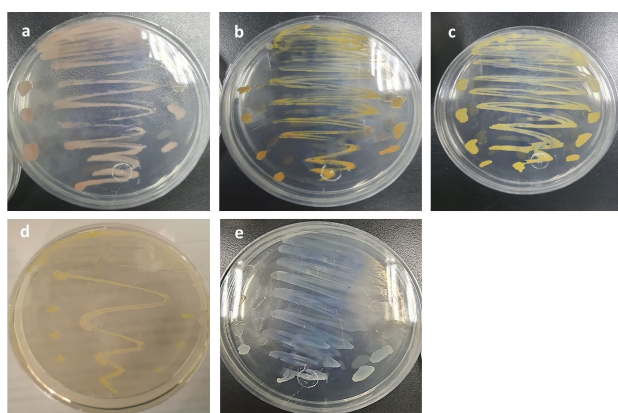


Figure S3. Pure cultures of bacterial isolates from wastewater a) isolate no. 1; b) isolate no. 3; c) isolate no. 7; d) isolate no. 15 and e) isolate no. 21.

Table S1. Molecular characterization and percentage of similarity of the five most potent selected bacterial isolates from wastewater by 16S rRNA gene

Isolate no.	Name	Similarity	Accession no.	Length of base pair
1	<i>Proteus sp.</i>	99%	OR976477	375
3	<i>Klebsiella sp.</i>	98%	OR976475	377
7	<i>Trabulsiella sp.</i>	99%	OR984189	378
15	<i>Escherichia sp.</i>	99%	OR984151	376
21	<i>Kosakonia sp.</i>	99%	PP029192	433

